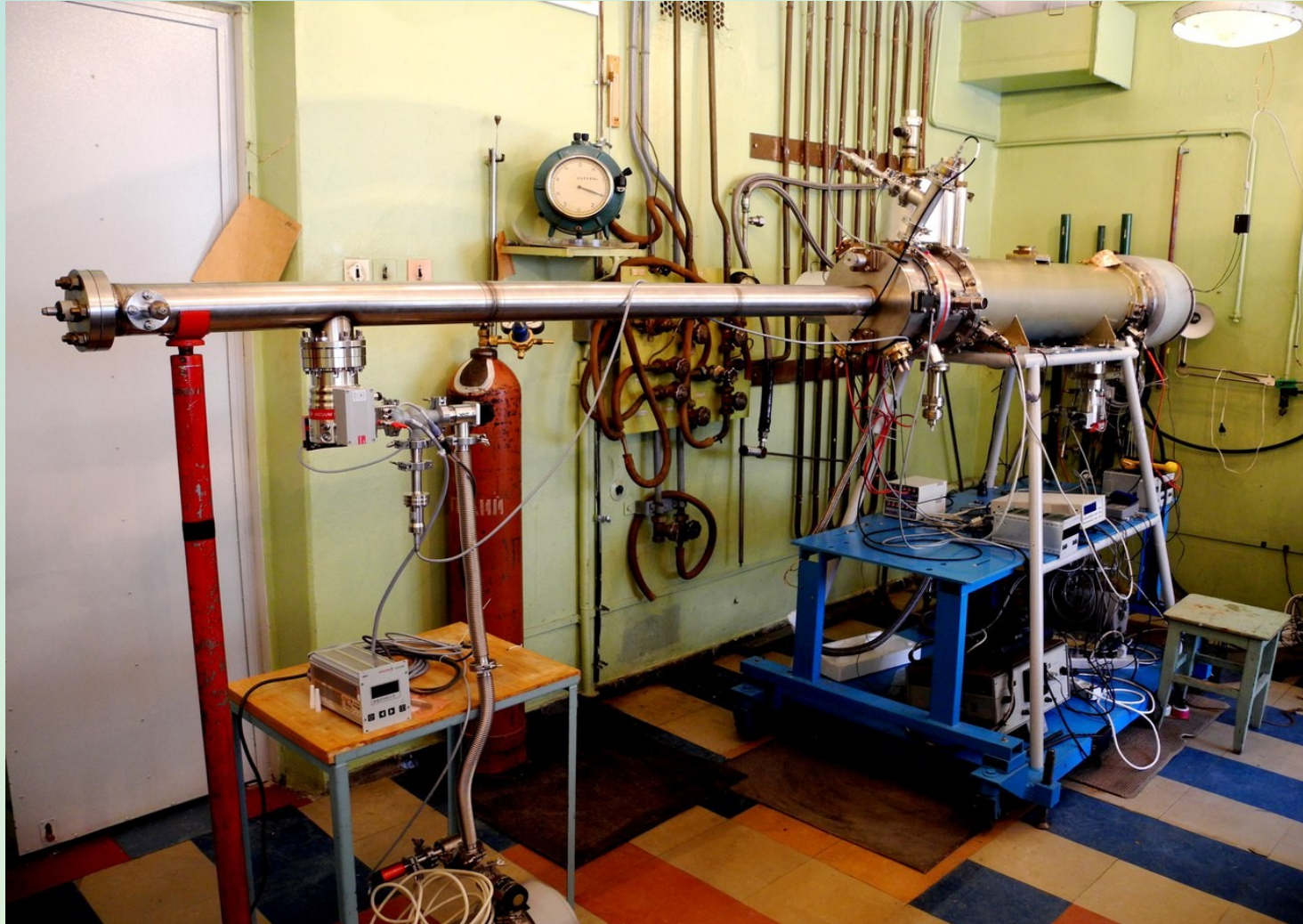


Simulation of Non-Axial Ions Extraction from Tubular Electron String Ion Source (TESIS)

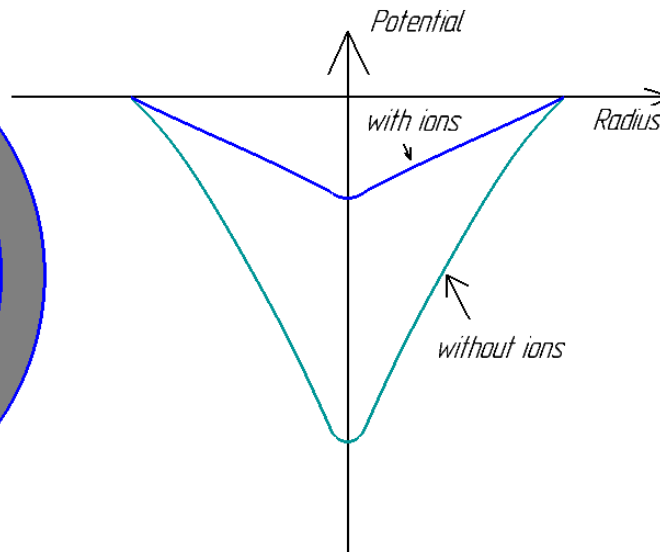
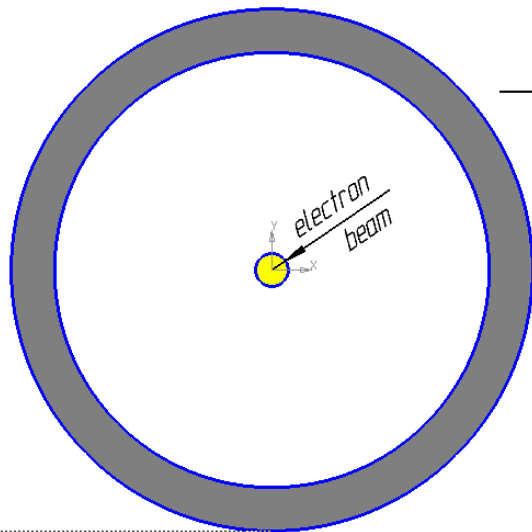
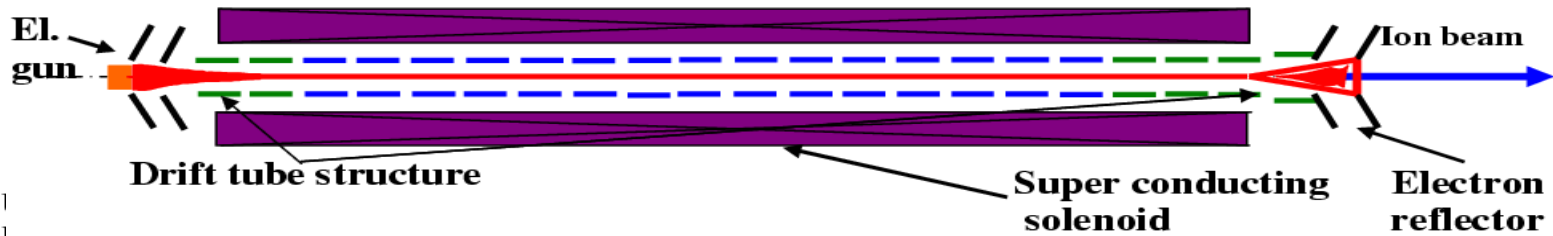
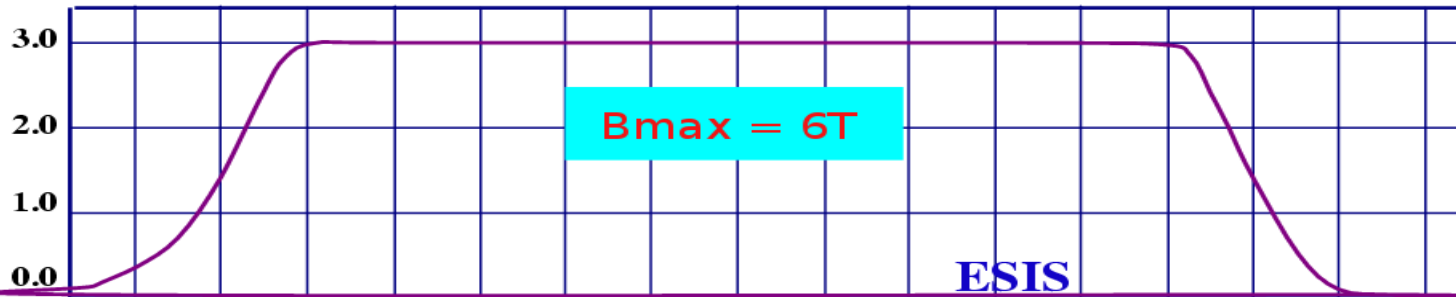
Boytsov A.Y.

KRION - 6T



Electron String Ion Source, (ESIS)

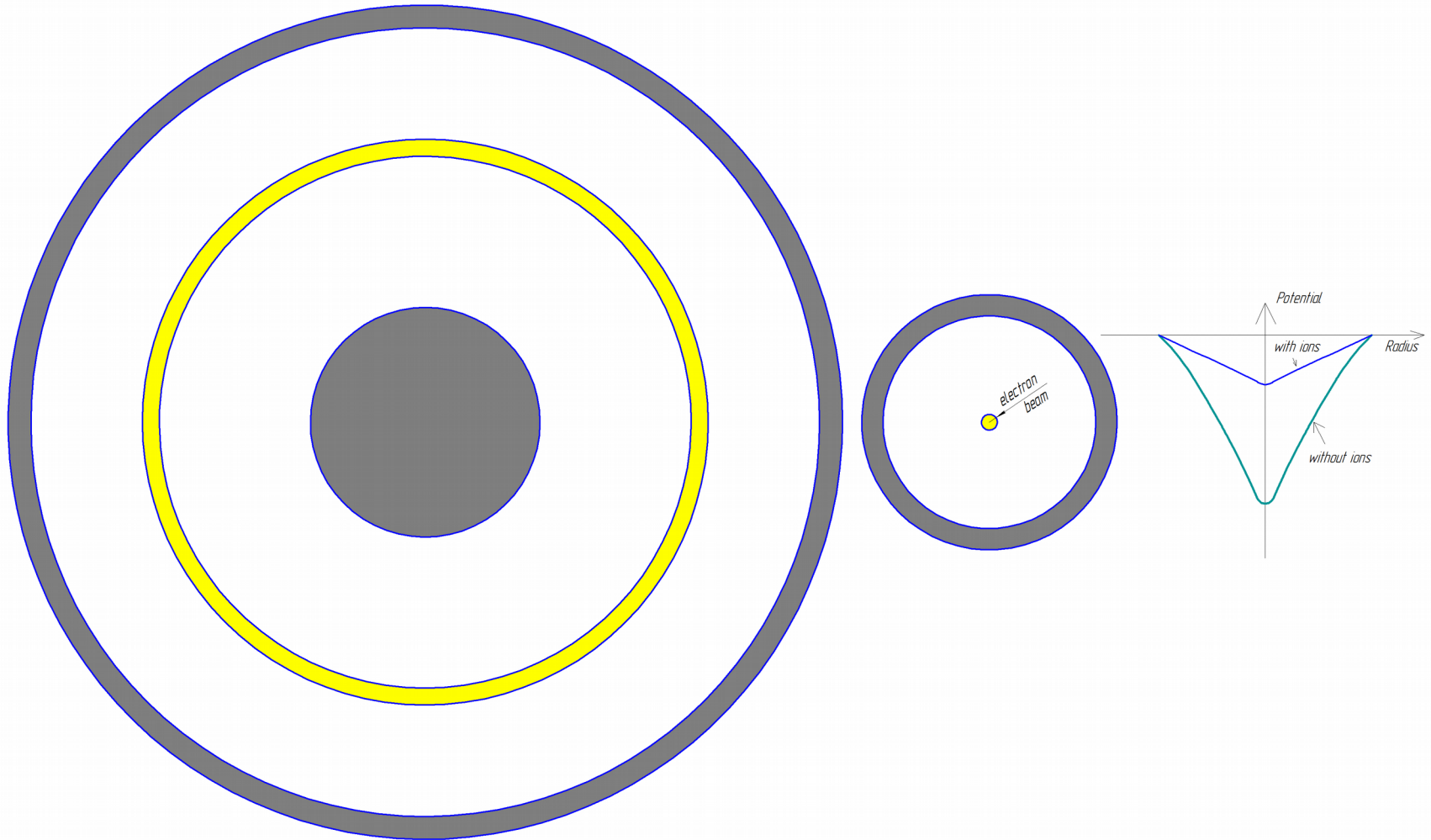
B,T



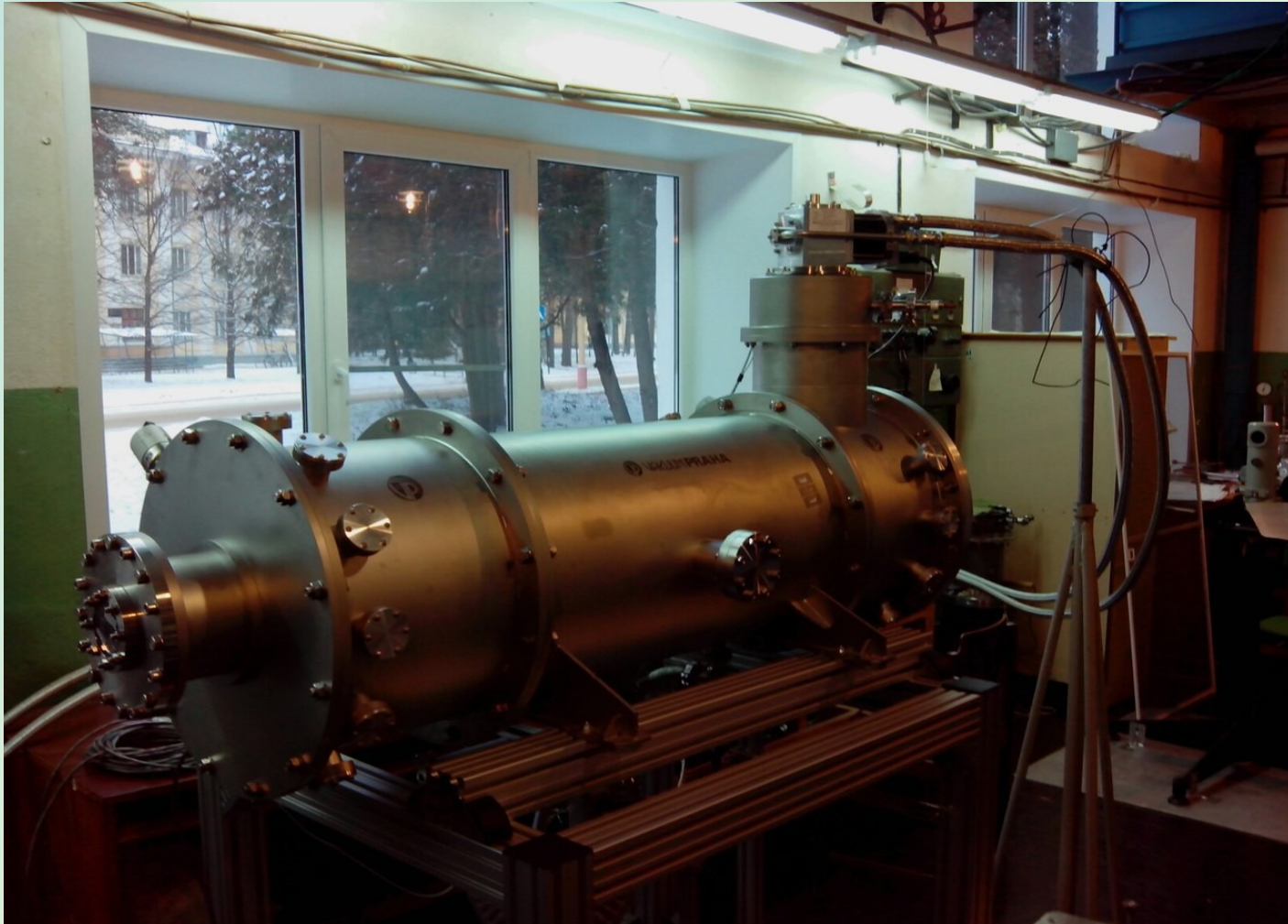
$5e+8 \text{ Au}^{31+}$

How to increase?

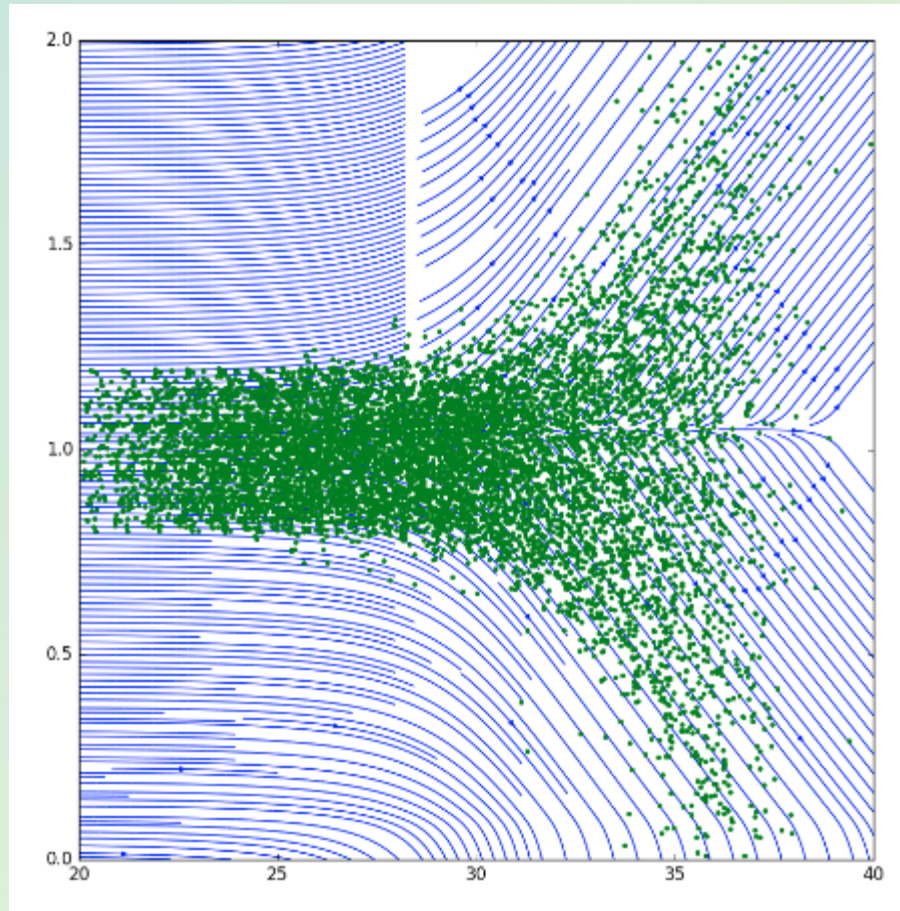
Tubular beam



Test bench



Ion extraction



Ef software

epicf / ef

Unwatch 3 Star 6 Fork 3

Code Issues 1 Pull requests 0 Projects 0 Wiki Insights Settings

Home

Edit New Page

noooway edited this page on Jan 27 · 34 revisions

Ef is a software for simulation of charged particles dynamics. It's primary areas of application are accelerator science and plasma physics. Below are several examples of the simulations that can be done with this program:

Pages 21

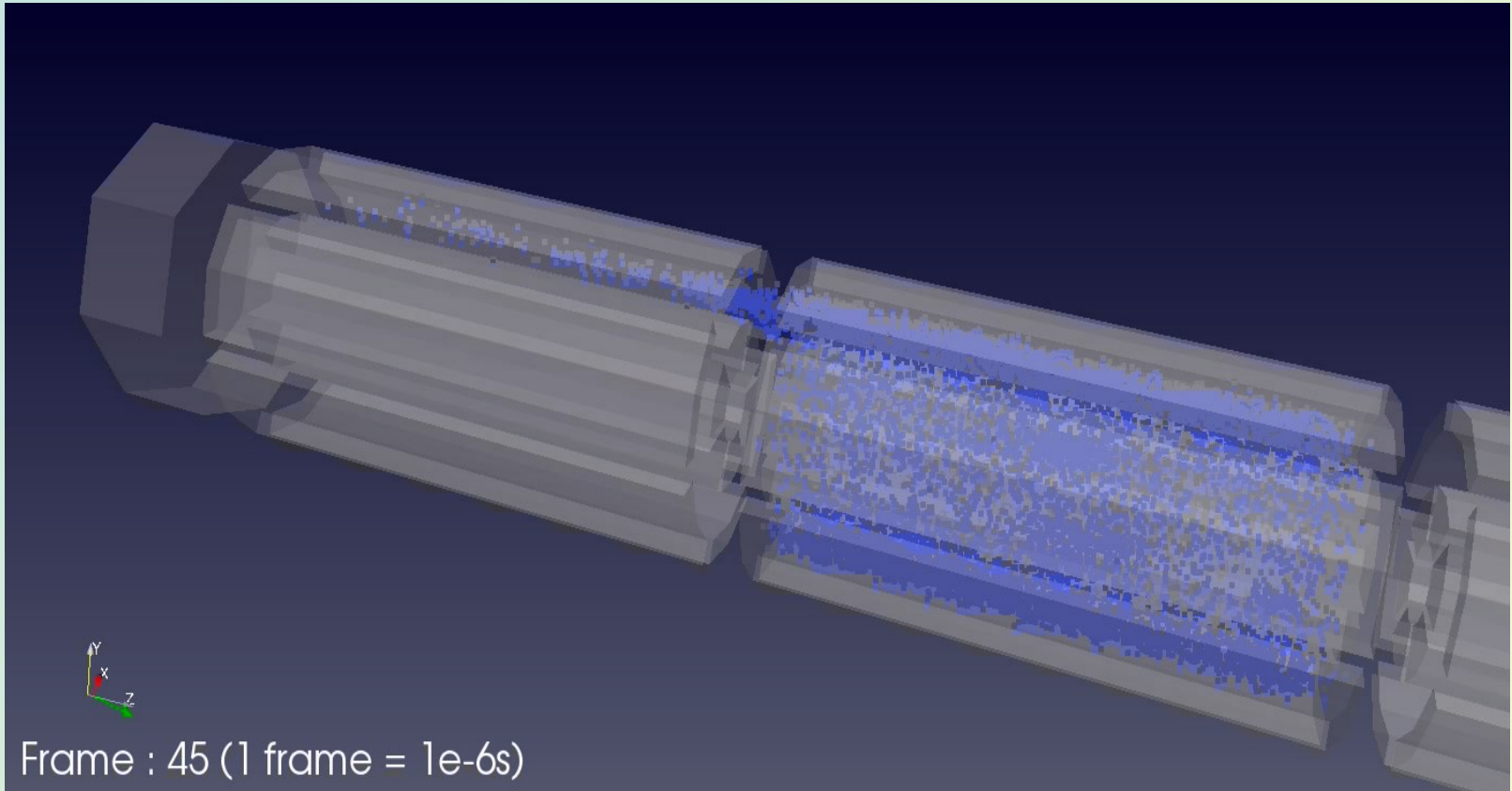
Single particle in uniform magnetic field;

Widening of a ribbon beam during the propagation

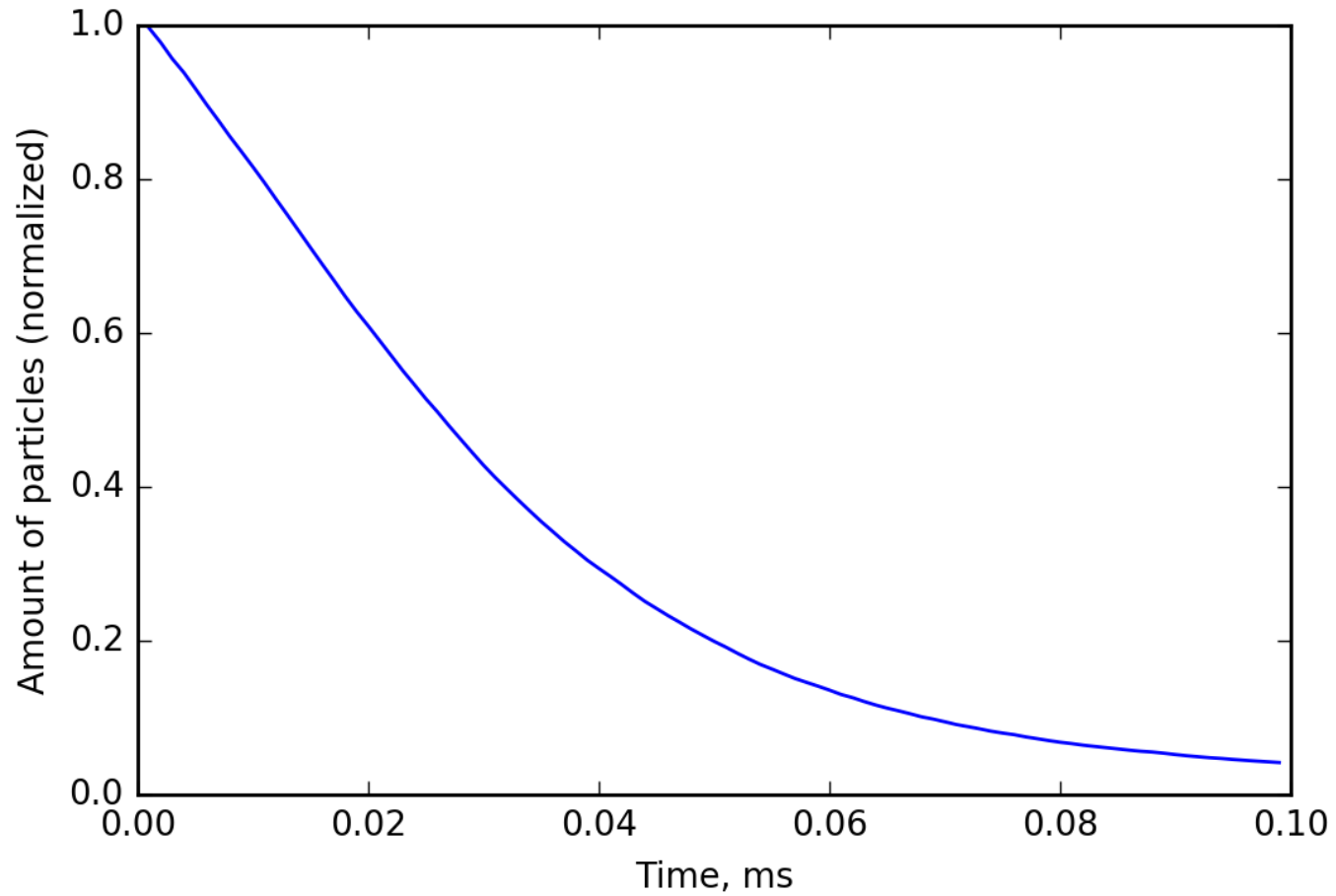
Ribbon beam in uniform magnetic field

- Home
- Motivation and Goals
- Alternatives
- Current Features and Development Roadmap
- What It Is and How It Works
 - The Problem of Charged Particles Dynamics Simulation
 - Intuitive Introduction to Particle-in-Cell Method
 - Simulation Workflow
 - Mathematical Model
- Installation
- Examples
 - Single Particle
 - Single Particle in Free Space
 - Single Particle In Uniform Magnetic Field
 - Single Particle In Uniform Electric Field
 - Electron Beams
 - Ribbon Beam Contour
 - Contour of Ribbon Beam In Uniform Magnetic Field
 - Axially Symmetric Beam Contour
 - Contour of Axially Symmetric Beam In Uniform Magnetic Field
 - Potential well of cylindrical

Results



Results



Summary

Simulation by Ef software

Time of ion extraction from tubular geometry

Design of extraction system

Спасибо за внимание